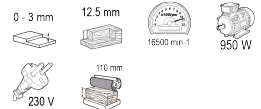
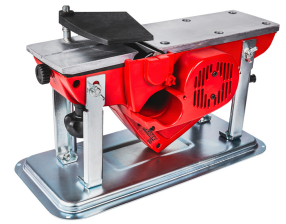


Planer 900W 110x3mm stand RDP-EP18

Art. number: **055108**

Barcode: **3800972033306**

- ✓ A powerful 900W motor ensures high productivity and efficiency when working with different types of wood
- ✓ Wide working area of 110 mm. enabling fast and efficient processing of large surfaces
- ✓ The planing depth can be adjusted up to 3 mm, which provides flexibility when working with different types of materials
- ✓ Stand available in the kit, which facilitates the workflow in certain procedures. The stand has small holes that allow it to be attached to a desktop, thus ensuring maximum stability during work



TECHNICAL FEATURES

Parameter	Measure Unit	Value
Planing depth (mm)	mm	0 - 3
Maximum notch depth (mm)	mm	12.5
Maximum no- load speed (min-1)	min-1	16500
Rated input power (W)	W	950
Rated voltage (V)	V	230
Rated voltage type		Corded - Electrical Grid
Planing width (mm)	mm	110

EQUIPMENT

Paralel guide	1 pc.
Stand	1 pc.

LOGISTICS INFORMATION

Type of package	Quantity	Width Length Height	Volume	Net Brutto Tara	Barcode
pieces	1 pieces	38 x 19.5 x 20 cm	0.01482 m3	6.0000 - 6.3333 - 0.3333 kg	3800972033306
carton	3 pieces	61.2 x 39.7 x 22.2 cm	0.05394 m3	19.0000 - 19.0000 - 0.0000 kg	38009720333064